

# Appendix

# Community Plan

Covering the parishes of Dunstable,  
Houghton Regis

Community Area 2

# This Community Says...



# Appendix -Feedback Form

## Local character

**What we have we love. Our history, countryside and communities. We need to build, with care to enhance what we have.**

NO ISSUES

Please select **one** type of Local Character from the list below that you would most like to see protected or improvements made within your local area:

- A.  Built Heritage (e.g. ancient monuments, old buildings, memorials)
- B.  Landscape Heritage (e.g. historic parks, protected landscapes)
- C.  Open space natural (e.g. countryside, nature reserves, viewpoints)
- D.  Open space man-made (e.g. parks, common land, village green)
- E.  No improvements

With your chosen type of Local Character, please pin-point **one** specific place on the map table using your **red** sticker where you think there is an opportunity. Please expand below on what you would like to see at this location:

## Transport

**How do we get around? With more of us on our cycleways, roads, rail. How do we improve & maintain our transport links?**

NO ISSUES

Please select **one** mode of travel from the list below that you would most like to see improvements made within your local area:

- A.  Vehicular
- B.  Bus
- C.  Train
- D.  Cycle
- E.  On foot

With your chosen type of Transport from above, please pin-point **one** specific place on the map table using your **pink** sticker where you think there is an opportunity. Please expand below on what you would like to see at this location:

## Jobs and Business

**Where will everyone work? Supporting local businesses to grow & attracting new business. We need to create jobs for all.**

NO ISSUES

Please select **one** type of Business from the list below that you would most like to see investment in to improve business or jobs in your local area:

- A.  Industrial parks
- B.  Business parks
- C.  High street development
- D.  Local retail units
- E.  Small-start-up office centres (innovation hubs)

With your chosen type of Business from above, please pin-point **one** specific place on the map table using your **lime sticker** where you think there is an opportunity. Please expand below on what you would like to see at this location:

## Environment

**Our environment is important. It influences how & what we create.  
We need quality development.**

NO ISSUES

Please select **one** of the Environment types from the list below that you consider the most valuable attribute to look after for the future within your local area:

- A.  Renewable energy
- B.  Pollution (Air)
- C.  Pollution (Noise)
- D.  Open Space - wildlife habitats
- E.  Flood risk

With your chosen type of environmental issue from above, please pin-point **one** specific place on the map table using your **green** sticker where you think there is an opportunity. Please expand below on what you would like to see at this location:

## Homes

**Homes for every stage of life. A house is not a home until it's lived in. We all need a home we're proud of.**

NO ISSUES

Please select **one** of the types of Homes from the list below that you consider are needed within your local area:

- A.  Older generation (downsizing/sheltered)
- B.  Single living (lifestyle/separation)
- C.  New starter homes
- D.  Family homes
- E.  Affordable homes

With your chosen type of Home from above, please pin-point **one** specific place on the map table using your **purple sticker** where you think there is an opportunity. Please expand below on what you would like to see at this location:

## Growth & Infrastructure

**Where to place homes & services. Supporting market towns, villages & new settlements.  
We need to plan places to grow communities.**

NO ISSUES

Please select **one** Infrastructure facility from the list below that you consider is most needed in your local area:

- A.  Healthcare
- B.  Schools
- C.  Retail
- D.  Community Centres
- E.  Leisure facility (leisure centre, play areas etc.)
- F.  Utilities improvements (telecoms/electricity/gas/foul treatment)

With your chosen type of Infrastructure from above, please pin-point **one** specific place on the map table using your **orange sticker** where you think there is an opportunity. Please expand below on what you would like to see at this location:

# Appendix - Feedback Form Summary

The following data for Community Area 2 was collected at the event held on Thursday 9 March 2017 at Bedford Square, Houghton Regis from 2:30pm until 7:30pm using questions from the feedback form illustrated on the previous page.

Feedback Form Summary						
Response	What would you most like to see protected or improvements made?	Local Character	What would you most like to see improvements made in?	Transport	Would most like to see investment in to improve business or jobs?	Jobs & Business
No Response		3		6		5
A	Built Heritage (e.g. ancient monuments, old buildings, memorials)	7.8	Vehicular	14.3	Industrial parks	1
B	Landscape Heritage (e.g. historic parks, protected landscapes)	6.3	Bus	11.3	Business parks	7
C	Open space natural (e.g. countryside, nature reserves, viewpoints)	18.3	Train	3	High street development	23.2
D	Open space man-made (e.g. parks, common land, village green)	13.5	Cycle	6.3	Local retail units	5.2
E	No improvements	0.3	On foot	6.3	Small-start-up office centres (innovation hubs)	4.7
F	No F question on this theme	0	No F question on this theme	0	No F question on this theme	0
Nothing Recorded		5		7		8
<b>Total</b>		<b>54</b>		<b>54</b>		<b>54</b>

	What do you consider the most valuable attribute to look after for the future?	Environment	Which you consider are needed the most?	Homes	Which you consider are needed the most?	Growth & Infrastructure
		4		2		0
	Renewable energy	8	Older generation (downsizing/sheltered)	9.8	Healthcare	12.6
	Pollution (Air)	11.2	Single living (lifestyle/separation)	3.8	Schools	6.6
	Pollution (Noise)	0.7	New starter homes	7	Retail	10.6
	Open Space - wildlife habitats	22	Family homes	7.5	Community Centres	5.2
	Flood risk	2	Affordable homes	17	Leisure facility (leisure centre, play areas etc.)	6.6
	No F question on this theme	0	No F question on this theme	0	Utilities improvements (telecoms/electricity/gas/foul treatment)	2.4
		6		7		10
		54		54		54

## Note

The public were instructed to only tick one category for each theme. Where an individual ticked more than one category, their choices are divided evenly across the categories.

## Local Character

**Question:** With your chosen type of Local Character, please pin-point **one** specific place on the map table using your **red** sticker where you think there is an opportunity. Please expand below on what you would like to see at this location:

There are many spaces and heritage that have already been decimated by over development, and Houghton Regis is a prime example of this. It was destroyed in the 50s/60s, and it has been gradually eroded, and the new builds continue to do this. The Green Belt is there for a reason, but it seems to not matter anymore.

Green spaces are essential to all towns. All equally important!!

Much of Dunstable has heritage sites/ ancient monuments which must be preserved.

I hope that the local characteristics (green space in Houghton Regis) is maintained. Not sure about improving.

See green 1190 @ Hammersmith/ Westminster Gardens.

Current open space being protected.

Continued support of Priory Church, House and Gardens.

Houghton Regis is a historic town which is rapidly losing its identity and heritage as the town grows. All these aspects A-D must be retained, maintained and respected for generations to come.

No need to build near Malden Bower.

Open spaces need to be provided to support social integration and a strong sense of community cohesion in new developments.

I would like common land, parks, etc. protected across all areas.

Red House - Like to see this refurbished and used as a museum, etc.

Barley Brow CWS. Need to recognise, protect and enhance remaining undeveloped green infrastructure sites in HR (particularly Bidwell/ Sewell area).

I think it is important that the new growth and housing do not encroach on the current open spaces and parks within the town (i.e. Windsor Drive).

Village green could be improved.

Make more of promoting Priory Church as a serious tourist attraction given the great history surrounding it.

Oakwell Park. This house with associated preserved site (Ancient Monument) is invaluable to preserve in the midst of HRN2.

Safe space for families to visit (no motorbikes).

More people walking there. Houghton Hall Park.

Houghton Regis green very important and keeping the cricket.

Village Green very important. Keep cricket matches.

I would hope to see as much open space in the new developments north of Houghton Regis as there is in the older areas such as Parkside.

Protect the countryside around Maiden Bower site.

I believe the area between Dunstable and Totternhoe should be left undeveloped (NLP432) seems to be part of Green Belt (south of Green Way not on Local Plan).

Areas within walking distance of residents, such as D Downs and Blows Downs - protect and care for walks - green lanes, etc.

Retention of open countryside and access.

Our village green protected. It is our heritage. Open spaces like Windsor Drive, Parkside Campus NOT built on with houses. We have a deprived area. We do not need these areas turning into slums thank you.

Enough with building houses - we need farmland to feed us and for wildlife to flourish especially bees.

Protect our village green and more open spaces required.

Maidenbower ALP144 is in Houghton Regis. It was refused planning permission in 2011. Why is it back on the call for sites? To build around it would destroy the heritage and views.

Area around Bluewaters Woodland could be better developed/ maintained and improved - i.e. play apparatus. Better measures to stop nuisance bikers.

Maidenbower and Sewell Heritage Park leading down Greenlanes to the 5 knolls and Dunstable Downs.

Investment in conservation area, listed buildings.



## However, unacceptable use of language has been omitted.

### Transport

**Question:** With your chosen type of Transport, please pin-point **one** specific place on the map table using your **pink** sticker where you think there is an opportunity. Please expand below on what you would like to see at this location:



I do not drive, and there is a misconception when developing areas that people do. I don't want a bus service to take me from one set of shops to another only, I need a bus service that serves everyone to get from where they are, to where they need to be.

Bus way expanded to cover Dunstable/Houghton Regis and Luton.

Again all areas of Dunstable.

All vehicles in Dunstable to move freely - congestion on A5 is a constant source of static traffic in morning and evenings. A5/M1 Relief Road may improve situation.

It takes around an hour walking/ by public transport to access train stations. Please encourage green ways.

Redevelop Neptune Square so cars don't park on yellow lines. Create parking.

Enforced traffic control in Dunstable, e.g. bus lanes, hatched boxes, traffic lights (camera enforcement).

With the growing town of Houghton Regis we need to see efficient and effective transport links, especially buses and the busway.

No train to Dunstable. Busway bad service "C" - should be small hopastop (at night and Sunday) feeding regular busway service.

A comprehensive bus service needs to be available to all in order to reduce pollution, congestion and social isolation.

Buses to Leighton Buzzard for older people who cannot get into the Dunstable town.

Take out crossing - hold up all traffic on A5 going north.

Maintain pathways - as a pensioner paths in the area are very uneven, broken slabs, non-existent paths. We are surrounded by countryside and no paths taking us there.

Failure to integrate HRN1 and HRN2 and provide safe pedestrian/wildlife corridors.

The town centre and Bedford Square need better and increased parking. Measures to reduce through traffic (alternative route?) would also be good, although a day time reduction would work with night traffic allowed.

No bus service up Poynters Road or through Woodside estate to town.

Need less traffic passing through A5 Dunstable - yet to see what new link road will do.

We should try and bring back on road parking on High Street as it used to be. Make pavements narrower and put in chevrons. Short stay parking.

High Street - to dramatically reduce traffic flow to allow pedestrians better freedom.

Less traffic.

I would like to see the busway used by more people.

Public transport to Leagrave Station. More public transport to/from Toddington.

I would like to see the large amount of traffic lights removed through Dunstable. Bring back the roundabouts to increase the flow of traffic.

Improve cycleway (segregated) provision on A5 town centre and surrounding roads (A5120).

With the A5 through Dunstable being de-trunked and hopefully heavy traffic being removed through Dunstable, encourage walking in the town centre to rejuvenate it - shops, open spaces, seats, etc.

Reduced speeds and social infrastructure improvements.

Cars on pavements with no access for people on foot or mobility scooters and prams/pushchairs.

More environmentally friendly.

Cars parking across footpaths all along Houghton Road. More ticketing required.

Sewell Nature Reserve and cycleway is part of Houghton Regis but it's very difficult for cyclists to get there safely, especially families. A new route is needed from HRN2, across the A5, to Sewell to access this part of Houghton Regis. A bridge would be good!

Better cycleways - separate from vehicular traffic would promote safer cycling.

Townsend Industrial Estate, Houghton Road, Boscombe Road link road.

Extension of busway. Luton - Dunstable - Leighton Buzzard.





## Jobs & Businesses

**Question:** With your chosen type of Business, please pin-point **one** specific place on the map table using your **lime sticker** where you think there is an opportunity. Please expand below on what you would like to see at this location:

Bedford Square needs a good clean (power wash), and improved security and access. It's a lovely centre, wonderful centre with fantastic retailers, but they have little support to improve and grow their businesses.

Also business is the life blood of every town.

In order to revitalise town centre more national/local/specialised traders to be encouraged.

Superfast broadband for homeworkers? What are the trends? Homeworking?

A lot of people work from home, but if there was an office area here it would enable self-employed, etc. to meet up with others. The area is a bit of a mess anyway, and there's a post office across the road. Between Elm Park and Brentwood grass.

To provide employment.

Dunstable and Houghton centres.

New developments in Houghton Regis will mean more opportunities for a wide range of businesses.

High Street is changing with internet, need new approach.

There are many empty buildings in the town centre that could be used for a variety of businesses.

Middle Row compulsory purchase and renovation.

Where will everyone shop and bank? We need shops and BANKS. Not everyone shops online or bank online, especially when you are a pensioner.

Strengthen the retail offering on Bedford Square so it can attract people from the wider Houghton Regis North area.

HR centre needs to be: 1) more accessible, 2) less traffic, 3) nicer looking. In particular, Bedford Square needs a major redevelopment.

Regenerate High Street.

We need to offer cheap short term accommodation for aspiring businesses to start up with a low risk and not having to sign up to long leases.

Lack of development in High Street has led to downgrading or existing properties.

More opportunities for local people.

I think Bedford Square needs modernising as it hasn't been improved since the 1960s.

Develop High Street North from Church Street crossroads north - more people/pedestrian friendly.

Keep the town centre alive and growing.

Improvements to built environment and shopping experience.

Dunstable High Street is dying on its feet.

Keep the town centre where it is but knock down Bedford Square and replace with modern day shops.

White Lion - better offering of retail units - opportunity exists in empty units. Needs to be made attractive to business.

Redevelopment of Houghton Regis town centre, incorporating Bedford Court site, former vicarage, Thomas Whitehead School and Bedford Square.

Because they bring jobs without congestion.



## However, unacceptable use of language has been omitted.

### Environment

**Question:** With your chosen type of environmental issue, please pin-point **one** specific place on the map table using your **green** sticker where you think there is an opportunity. Please expand below on what you would like to see at this location:

I have long been an advocate of Green Energy, and would like to see all new builds incorporate renewables and energy saving devices, such as solar panels and thermal heating (these are a standard in some other European countries). In Houghton Regis in particular, there is an increased risk of flood.

Renewable energy makes the environment healthier.

Large lorries polluting the A5 high street and damaging historic buildings.

Traffic causes pollution any reduction to be in conjunction with transport and business.

I am interested in all of the environment issues identified. I can't prioritise one over the other.

Keep this open space and manage it properly. Weeds shoot up in spring and last a few months and it looks a mess. Ivy growing all over trees - cut it back.

To keep as healthy as possible.

Further investment in renewable energy while not detrimental to wildlife.

The future is renewable energy - especially solar. The Bidwell area is a known flood risk so why are HRN2 planning to build there?!

Poor air quality in Dunstable.

Investment in renewables across the town.

Air pollution on A5 from crossroads to Priory House going north.

We have a wildlife quarry - we need to expand on this. Develop somewhere to sit and enjoy somewhere for a cuppa tea - not scramble bikes.

CBC must recognise the importance of Houghton Regis Chalk Pit (CW5/SSSI). Unique site (42ha) that will be surrounded by development in Local Plan - should have its own policy as of strategic importance.

It would be good to see a major renewable energy plant along with the new developments (wind and/or solar). Plus more roof-top solar on homes and businesses.

Open space improves pollution, both air and noise.

So much pollution in centre of Dunstable.

With spreading developments far too much wildlife habitats are being lost. Oakwell Park is an area that could be used to protect this.

The cricket pavilion could have solar panels.

Wildlife very important.

Ensure that funds are available to continue the excellent work being carried out on the Blows Downs

Although A5-M1 link is about to open, there is still a significant risk of high volumes of traffic and pollution (air and noise) on the section of A5 in Dunstable.

Traffic reduced/removed from the town centre, making it a healthy and attractive place to go.

Local renewable power feeding new build homes.

No housing on WINDSOR DRIVE OR KINGSLAND. Once it's gone it's gone. Look after our wildlife also - they are God's creatures also.

No brainer.

Planning Officers not sending letters out for objections or approval, to ensure letters are signed for. SB/07/1043 (134 High Street, Houghton Regis) would like to object.

Oakwell Park, there is an excellent opportunity here to create a nature study centre for people of all ages with hands-on training in conservation.

The site at the Chalk Pit currently managed by the Wildlife Trust needs to be guaranteed!

All present open space should be kept and added to. Building on open space such as Windsor Drive should be kept. Additional open space should be found.

Less traffic town centre - air pollution high in town.



## Homes

**Question:** With your chosen type of Home, please pin-point **one** specific place on the map table using your **purple sticker** where you think there is an opportunity. Please expand below on what you would like to see at this location:



Affordable homes for everyone! Not what is considered affordable! Too much emphasis is put on home ownership, and not everyone can afford that, therefore this is not affordable. Often the only people who CAN afford to buy new houses, or ANY houses, are private landlords, who then charge crippling rents on homes with no long term security.

Providing A will provide suitable living for older generation also freeing up Council housing for young families.

In Dunstable generally - homes with small gardens not flats.

People living longer - not enough suitable small 2 bedroom premises available.

The description does not state that singles are included in "everyone". Isn't the "single" demographic one of the faster growing groups, or is it boomerang households? Homes also need to be of a reasonable competitive price and a decent size and quality.

Need bungalows? Apartments?

Redevelop Council garage areas. Buy up unused private garages, make more flats. Hammersmith Gardens (at end of).

To allow the younger generation a chance to get on the housing market.

ALL homes should be affordable.

No homes are "affordable homes" just need to build good homes in the right area.

Homes to include fairly rented covering a wide variety of needs; e.g. 1, 2, 3 bedrooms, flats, bungalows, etc.

Affordable homes' is a term that makes no sense. Rented accommodation under a fair rent scheme would enable old people, young people, single people to get homes. [Box added for 'rented housing association']

New REALLY affordable houses for young people who are paying horrendous rents.

Affordable homes. For genuine first time house owners - my grandchildren are now in their twenties and still have nowhere to live except with grandparents.

No need to identify specific location as quantum of development in HR should provide more than adequate housing mix.

All homes should be affordable.

While there is need for homes of all types, especially affordable housing, I think there is a real need for more small flats and HMOs in the area.

All types of homes for all age groups with thought for provision of transport, shops, etc. relevant for age groups.

Affordable homes takes care of A, B and C.

More places like Priory View (and new one in Houghton Regis) on outskirts of Dunstable - either south or north.

Affordable housing is essential to provide opportunities for people to get onto the housing ladder.

Smaller homes for older later living for people to downsize to without having to move into a block.

Bedford Road - Infill sites up to 2 acres could be used for this.

First time buyers.

More affordable homes for older people.

Affordable homes - which are affordable for young people.

I would like to see two bedroom homes with larger gardens and parking for single people. We don't or want to live in apartments.

Although I ticked affordable housing, there needs to be a considerable effort to provide Council homes, of which there is a great shortage.

Needs to be near shops, buses, other facilities such as doctors surgeries. Provision needs to be made for disabled/elderly buggies. Facilities such as Priory View, but preferably not on a hill and in the town centre.

Help to Buy - starter homes and shared ownership to enable and encourage affordable transition to home ownership.

Would downsize just nothing out there (bungalow). Places for single people.

Cannot downsize - lack of smaller properties.

Family homes - not closely concentrated but of good standard and quality.

Small starter homes which are affordable to local youngsters of Central Beds.

2 bedroom.

More town centre - where land permits, close to amenities, frees up family homes by downsizing. Affordable homes need still not being met!

## However, unacceptable use of language has been omitted.

### Growth & Infrastructure

**Question:** With your chosen type of Infrastructure, please pin-point **one** specific place on the map table using your **orange sticker** where you think there is an opportunity. Please expand below on what you would like to see at this location:

These are all important for any town or community. People need reassurance that BEFORE any new developments are considered that these things will be in place. Too often, I have found developments that were promised these things in pre-app, but then were omitted when budgets over-run.

Dunstable.

See comments on other areas.

With the anticipated growth in Central Bedfordshire, the amount of infrastructure will need to be increased. As Building Schools for the Future ended 6(?) years ago, when will schools be refurbished, rebuilt, extended? This is in addition to new schools being required. Ensure section 106 is claimed. Hurry up with CIL!

All of the above needed in HRN1 and HRN2.

Expand/improve current location.

Houghton Regis needs sufficient facilities for an expanding population. If the infrastructure is not here then we are failing the community. The bank was closed! This was a huge mistake.

Just about to close the indoor bowls rink in Dunstable Leisure Centre.

Create interim community facilities whilst new development is taking place. This would provide support for new residents in the Houghton Regis development and prevent social isolation and other health related issues. This is essential to wellbeing of new communities and quality of life of residents.

Broadband speed in Dunstable.

Cemeteries needed - in Houghton Regis - I don't want to be buried in Dunstable after having lived in Houghton all my married life. Plus it costs triple to go to a different town.

7000 homes have outline consent but NO additional healthcare facilities have been provided for the already grossly under provided.

While the community centre in Bedford Square works for some functions, the town needs a centre with a performance space and several smaller, local gathering places.

There must be good shops in Houghton Regis or everyone will go elsewhere. Where are new shops to go? Where is the space for them?

Leisure centre needs refurbishment urgently. Leisure goes alongside open space and healthcare - outdoor fitness areas like Willen Lake and Dallow Road, Luton.

Central place for doctors and a local A&E all in one place BUT must have parking.

We need to encourage our children and families to be more conscious about the need to lead a healthy lifestyle.

Health and social care hub.

Question is how to attract quality shops to relocate to the town. One quality shop should attract others but may need to be subsidised to relocate in the first place.

There is currently a lack of doctors (GPs) in the area, so more surgeries need to be set up.

We need a bank.

Bank needed badly.

We need another secondary school in Houghton Regis - it's already starting, but progress is slow.

The only doctors surgery serving North Dunstable is closing. With an increase in housing we need health services in the north of the town.

Improved healthcare facilities in town centre.

Some of the best shops that were in Dunstable have closed. Develop our empty shops as shops and business units.

Medical centre with doctors and nurse practitioners offering triage for "emergencies" and relieving pressure on A&E.

I have not stickered this as I believe only certain land can be used. As only 20 plots left! Central Beds have not kept their eye on the ball. We (particularly older folk) cannot travel to Bedford. GRAVEYARDS!!

Schools are being closed down and yet the population is increasing???

No community centre in Houghton Regis constructed for the community since the Co-op fire.

Windsor Drive is a fortunate accidental leisure area that doubles as a much needed football field. Being level it should be retained for sport and a pavilion built to increase usage.

Schools in general in Houghton Regis - an expanding population needs new but also quality schools.

Health and additional services, interlinking with community facilities and small leisure and day care services.

Upgrade leisure centre.

More quality retail in town/ restaurants to stop leakage to other towns. There is no 'destination town' in Central Beds, I think there should be. Managed growth is welcome.



# Appendix - Supplementary Questions on Feedback Form

## Thank you for responding to this consultation.

Your views will help us to shape the Community Plan that will inform the Local Plan, influence development decisions and help direct investment where it is needed. There will also be other opportunities to comment on the Local Plan as it is developed. There will be an opportunity to express your views in more detail at the next stage.

### Please answer the following questions:

Gender:  Male  Female Age range:  Under 18  18-25  26-35  36-45  46-64  65+

What postcode do you live at? \_\_\_\_\_

Which town/village do you shop at most often? \_\_\_\_\_

I am a local resident  I am a Town or Parish Councillor for \_\_\_\_\_

I am an organisation representative please state \_\_\_\_\_

Which town/village do you work in (if applicable)? \_\_\_\_\_

Do you consider yourself to be disabled?  Yes  No

To which of these groups do you consider you belong?  White British  Black or Black British  
 Asian or Asian British  Mixed  Chinese  Other Ethnic group (please write in) \_\_\_\_\_

### Would you like to be informed of the arrival of the Consultation Draft of the Community Plan for your area? We can notify you of its publication.

Be assured that your personal details will not be published in any report or passed to a third party.

By  post or  email

Name: \_\_\_\_\_

Address \_\_\_\_\_

Email: \_\_\_\_\_

Please tick if you would like to be kept informed of Local Plan Updates.

After completing this feedback form please place in box at front door.

Or post back to us at Local Plans, Priory House, Monks Walk, Chicksands, Shefford, Bedfordshire SG17 5TQ

**Data Protection Act 1998** Please note that your personal details supplied on this form will be held and/or computerised by Central Bedfordshire Council for the purpose of the Local Plan. The information collected may be disclosed to officers and members of the Council and its' partners involved in this consultation. Summarised information from the forms may be published, but no individual details will be disclosed under these circumstances. **Your personal details will be safeguarded and will not be divulged to any other individuals or organisations for any other purposes.**

Sign up for email updates ...

 [www.centralbedfordshire.gov.uk/localplanupdates](http://www.centralbedfordshire.gov.uk/localplanupdates)

More information on the Local Plan can be found here...

 [www.centralbedfordshire.gov.uk/localplan](http://www.centralbedfordshire.gov.uk/localplan)

# Appendix – Supplementary Questions Summary

## Public Consultation Houghton Regis Attendees Record

Response	Gender	Age	Res/Cllr/Org	Disabled?	Ethnic Group
Response	Male: 14 (34.1%)	Under18: 0 (0.0%)	Resident: 34 (85.0%)	Disabled-Y: 1 (2.4%)	White British: 40 (97.6%)
	Female: 27 (65.9%)	18-25: 0 (0.0%)	Councillor: 13 (32.5%)	Disabled-N: 41 (2.4%)	Black or Black British: 0 (0.0%)
	Unknown: 0 (0.0%)	26-35: 0 (0.0%)	Organisation: 9 (22.5%)		Asian or Asian British: 1 (2.4%)
		36-45: 6 (15.0%)			Mixed: 0 (0.0%)
		46-64: 19 (47.5%)			Chinese: 0 (0.0%)
		65+: 15 (37.5%)			Other Ethnic Group: 0 (0.0%)
Nothing Recorded	13	14	14	12	13
<b>Total</b>	54	54	54	54	54

Homes



GROWTH & Infrastructure



NEW PLACE  
33

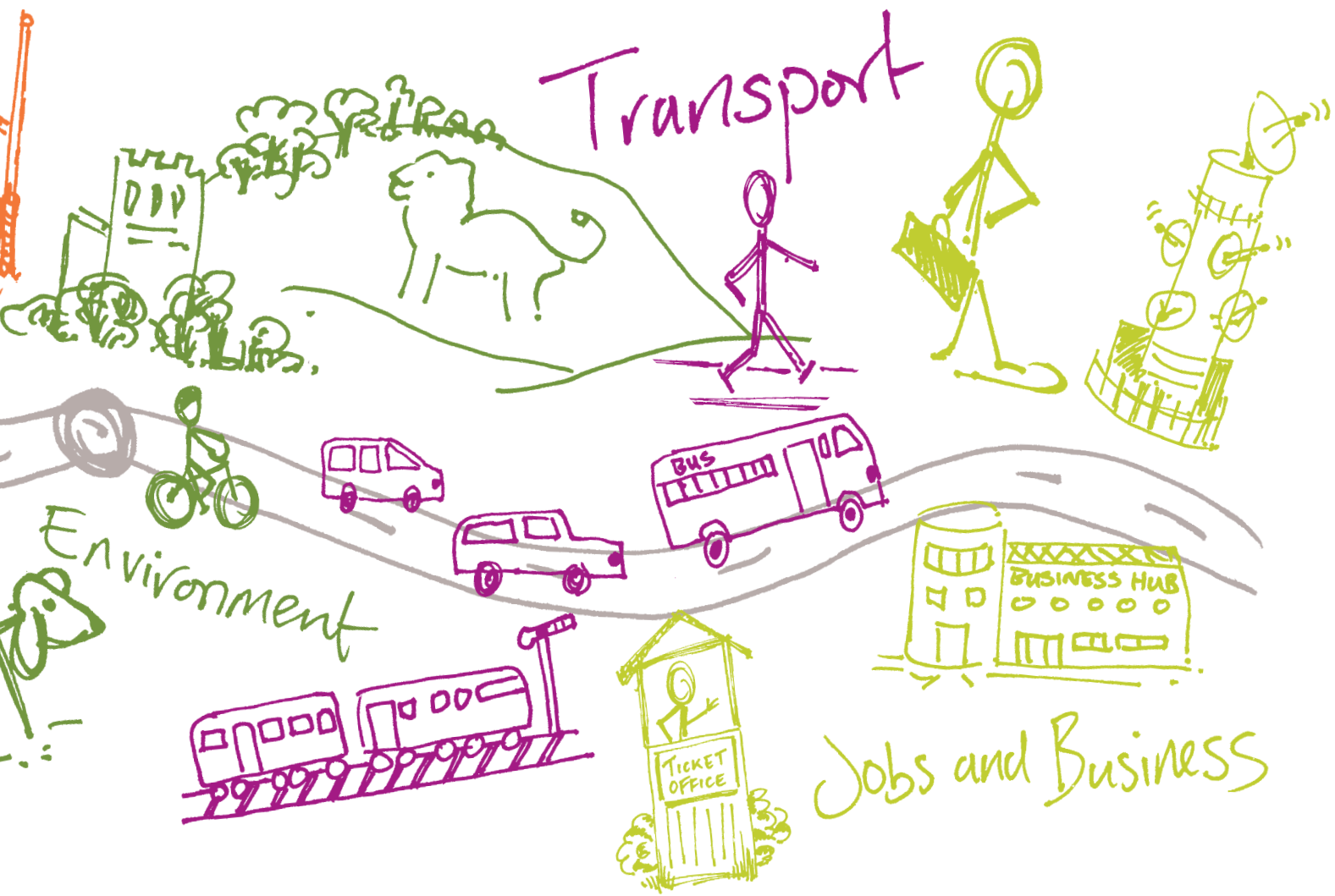


Local character



A great place to live and work.







# Shaping where you live 2035



## What happens next?

Community Planning is a continuing process and this Community Plan, which collates all the information gathered at the event, is the first time this type of information has been collected. There will be a series of actions arising from the Community Plan which are likely to influence or shape planning policy in the Local Plan, decisions on planning applications, and decisions on where money arising from development should be spent. These actions are identified in total within the 'Overview Statement of Community Planning' which details how they will be dealt with. Central Bedfordshire Council will seek to work in partnership with organisations including Town and Parish Councils, developers and other agencies to deliver on these actions.

## For more info on community planning ...

[www.centralbedfordshire.gov.uk/community-planning](http://www.centralbedfordshire.gov.uk/community-planning)

## More information on the Local Plan can be found here...

[www.centralbedfordshire.gov.uk/localplan](http://www.centralbedfordshire.gov.uk/localplan)

**Disclaimer** Central Bedfordshire Council is the statutory Planning Authority for the area and therefore is bound by legislation and must have regard to government guidance on planning matters.

Community Plan produced in consultation with Central Bedfordshire Council supported by [www.lda-design.co.uk](http://www.lda-design.co.uk)

### This document contains:

Contains OS data © Crown copyright and database right 2016  
Contains Royal Mail data © Royal Mail copyright and Database right 2016  
Contains National Statistics data © Crown copyright and database right 2016

Central Bedfordshire Council:  
© Crown Copyright and database right. 2016 Ordnance Survey 100049029

Central  
Bedfordshire

A great place to live and work.