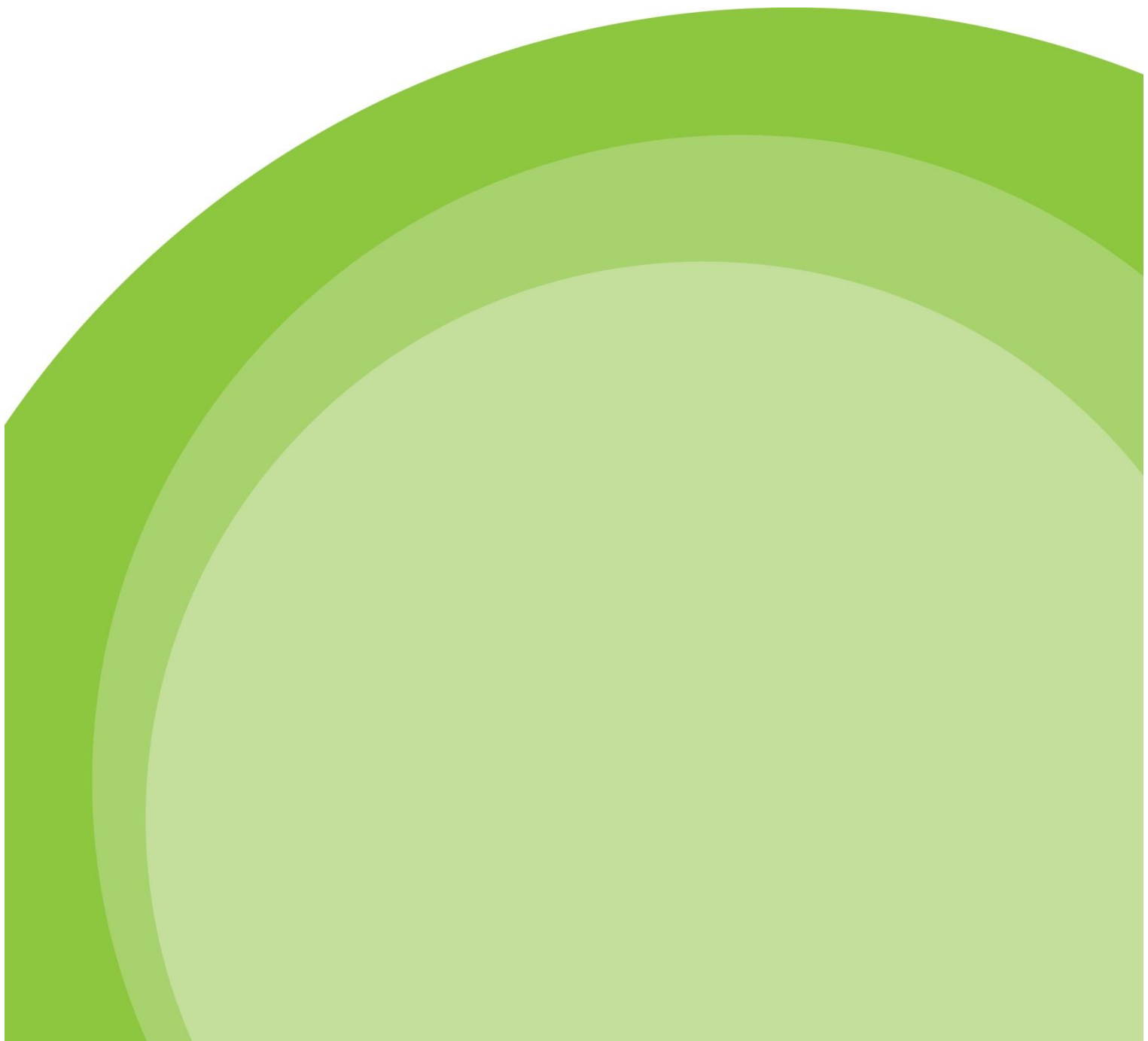




Identifying and Filing Records

Information Governance 2016



What is a record?

A record is any material that documents or supports the administrative, fiscal, legal and business transactions or the organisation. Examples of records include, but are not limited to:-

- Policy papers and recommendations
- Minutes of meetings
- Decision Papers
- Memoranda
- Correspondence
- Material that is received from external sources and used for research or official business
- Supporting material such as substantive drafts, annotated documents, raw data, notes of telephone conversations and meetings

The following checklist has been designed to help you determine whether or not an item should be treated as a record.

If the answer to any of these questions is 'Yes' then the item is a record and should be treated in line the corporate records management processes and procedures.

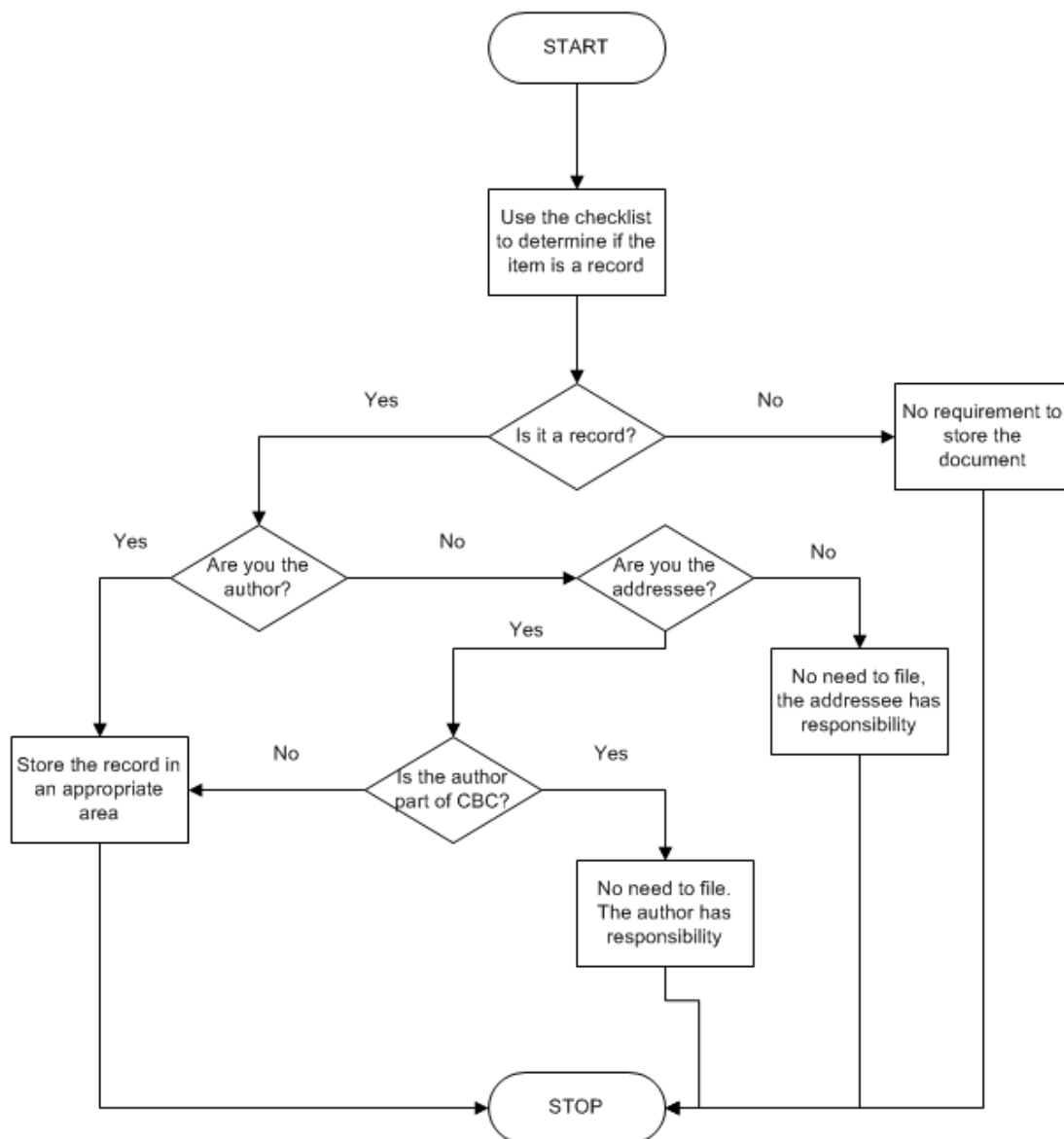
| |
|--|
| |
| Was it made or received in the course of official business? |
| Does it document a function of the authority? |
| Does it document an action taken? |
| Does it document a decision made? |
| Does it document the formulation of a policy? |
| Does it document a decision making process? |
| Does it document a change to organisational policy or procedure? |
| Does it have financial implications? |
| Does it have legal implications? |
| Is it required for the operation or administration of normal business processes? |
| Does it need to be approved by another individual or body? |
| Does it need to be reported to another individual or body? |
| Does it set a precedent? |
| Is it governed by legislation? |
| Does it affect or protect the rights and entitlements of citizens? |

Who is responsible for filing records?

Any office that creates a record is responsible for ensuring that it is filed in an official records keeping system i.e. Corporate S: Drive or BOX

Any officer who receives a record from outside the authority is responsible for ensuring that it is filed in an official records keeping system i.e. Corporate S: Drive or BOX. If you receive a record from another officer in the authority you should not have to file it as it should have already been captured, however, please bare in mind that access to the current location may be restricted (e.g. S:Drive) and therefore an alternative location may need to be sought.

The following diagram will help you to determine whether or not it is your responsibility to file the record.





A great place to live and work

Contact us...

by telephone: 0300 300 8000

by email: information.governance@centralbedfordshire.gov.uk

on the web: www.centralbedfordshire.gov.uk

Write to Central Bedfordshire Council, Priory House,
Monks Walk, Chicksands, Shefford, Bedfordshire SG17 5TQ