

Appendix

Community Plan

**Covering the parishes of Biggleswade,
Edworth, Langford**

Community Area 4

This Community Says...



Appendix -Feedback Form

Local character

What we have we love. Our history, countryside and communities. We need to build, with care to enhance what we have.

NO ISSUES

Please select **one** type of Local Character from the list below that you would most like to see protected or improvements made within your local area:

- A. Built Heritage (e.g. ancient monuments, old buildings, memorials)
- B. Landscape Heritage (e.g. historic parks, protected landscapes)
- C. Open space natural (e.g. countryside, nature reserves, viewpoints)
- D. Open space man-made (e.g. parks, common land, village green)
- E. No improvements

With your chosen type of Local Character, please pin-point **one** specific place on the map table using your **red** sticker where you think there is an opportunity. Please expand below on what you would like to see at this location:

Transport

How do we get around? With more of us on our cycleways, roads, rail. How do we improve & maintain our transport links?

NO ISSUES

Please select **one** mode of travel from the list below that you would most like to see improvements made within your local area:

- A. Vehicular
- B. Bus
- C. Train
- D. Cycle
- E. On foot

With your chosen type of Transport from above, please pin-point **one** specific place on the map table using your **pink** sticker where you think there is an opportunity. Please expand below on what you would like to see at this location:

Jobs and Business

Where will everyone work? Supporting local businesses to grow & attracting new business. We need to create jobs for all.

NO ISSUES

Please select **one** type of Business from the list below that you would most like to see investment in to improve business or jobs in your local area:

- A. Industrial parks
- B. Business parks
- C. High street development
- D. Local retail units
- E. Small-start-up office centres (innovation hubs)

With your chosen type of Business from above, please pin-point **one** specific place on the map table using your **lime sticker** where you think there is an opportunity. Please expand below on what you would like to see at this location:

Environment

**Our environment is important. It influences how & what we create.
We need quality development.**

NO ISSUES

Please select **one** of the Environment types from the list below that you consider the most valuable attribute to look after for the future within your local area:

- A. Renewable energy
- B. Pollution (Air)
- C. Pollution (Noise)
- D. Open Space - wildlife habitats
- E. Flood risk

With your chosen type of environmental issue from above, please pin-point **one** specific place on the map table using your **green** sticker where you think there is an opportunity. Please expand below on what you would like to see at this location:

Homes

Homes for every stage of life. A house is not a home until it's lived in. We all need a home we're proud of.

NO ISSUES

Please select **one** of the types of Homes from the list below that you consider are needed within your local area:

- A. Older generation (downsizing/sheltered)
- B. Single living (lifestyle/separation)
- C. New starter homes
- D. Family homes
- E. Affordable homes

With your chosen type of Home from above, please pin-point **one** specific place on the map table using your **purple sticker** where you think there is an opportunity. Please expand below on what you would like to see at this location:

Growth & Infrastructure

**Where to place homes & services. Supporting market towns, villages & new settlements.
We need to plan places to grow communities.**

NO ISSUES

Please select **one** Infrastructure facility from the list below that you consider is most needed in your local area:

- A. Healthcare
- B. Schools
- C. Retail
- D. Community Centres
- E. Leisure facility (leisure centre, play areas etc.)
- F. Utilities improvements (telecoms/electricity/gas/foul treatment)

With your chosen type of Infrastructure from above, please pin-point **one** specific place on the map table using your **orange sticker** where you think there is an opportunity. Please expand below on what you would like to see at this location:

Appendix - Feedback Form Summary

The following data for Community Area 4 was collected at the event held on Thursday 16th November 2016 at Biggleswade Town Council offices from 2:30pm until 7:30pm using questions from the feedback form illustrated on the previous page.

Feedback Form Summary						
Response	What would you most like to see protected or improvements made?	Local Character	What would you most like to see improvements made in?	Transport	Would most like to see investment in to improve business or jobs?	Jobs & Business
No Response		2		1		8
A	Built Heritage (e.g. ancient monuments, old buildings, memorials)	12.3	Vehicular	20.5	Industrial parks	2
B	Landscape Heritage (e.g. historic parks, protected landscapes)	3	Bus	23	Business parks	9
C	Open space natural (e.g. countryside, nature reserves, viewpoints)	33.8	Train	5	High street development	32.5
D	Open space man-made (e.g. parks, common land, village green)	16.8	Cycle	13.5	Local retail units	5.5
E	No improvements	0	On foot	6	Small-start-up office centres (innovation hubs)	11
F	No F question on this theme	0	No F question on this theme	0	No F question on this theme	0
Nothing Recorded		4		3		4
Total		72		72		72

	What do you consider the most valuable attribute to look after for the future?	Environment	Which you consider are needed the most?	Homes	Which you consider are needed the most?	Growth & Infrastructure
		1		9		4
	Renewable energy	8	Older generation (downsizing/sheltered)	18.5	Healthcare	17.9
	Pollution (Air)	1	Single living (lifestyle/separation)	4	Schools	17.4
	Pollution (Noise)	8.2	New starter homes	11	Retail	3.4
	Open Space - wildlife habitats	46.2	Family homes	4	Community Centres	2.2
	Flood risk	3.7	Affordable homes	17.5	Leisure facility (leisure centre, play areas etc.)	18.7
	No F question on this theme	0	No F question on this theme	0	Utilities improvements (telecoms/electricity/gas/foul treatment)	4.4
		4		8		4
		72		72		72

Note

The public were instructed to only tick one category for each theme. Where an individual ticked more than one category, their choices are divided evenly across the categories.

Local Character

Question: With your chosen type of Local Character, please pin-point **one** specific place on the map table using your **red** sticker where you think there is an opportunity. Please expand below on what you would like to see at this location:

Preservation of Conservation Area.

That Councils should be adequately consulted with on their requirements for LEAP/LAP on S106 agreements.

The town centre would benefit on maintaining the historic character to attract people in. There are large, undeveloped plots which could be reused.

Keep the open space across the open country.

The space to be kept as agricultural fields.

Retain agricultural land for growing food. Using fuel to transport food from all over the world is not sustainable. Reduce carbon footprint.

Allotments more of instead of housing to encourage children to grow their own vegetables to eat instead of buying this.

Maintain the Market Square.

Open land no building.

Maintain common land and network of footpaths/bridleways.

Maintain Biggleswade Common and footpaths.

Keep areas of countryside that matter and stop protecting every green field.

Green space inside villages are getting fewer by the day.

Please protect existing common land/recreation ground and footpaths in Langford to preserve the semi-rural nature of the village.

See comments in 'Environment', which also relate to local character re: Biggleswade Common.

Ensure common lane remains protected from development.

Protect Biggleswade Common from development.

Upgrade local nature reserve.

Splash park for kids of all ages.

Upgrade local nature reserve.

Potential loss of historic buildings related to the brewery for housing - loss of character and 'old Biggleswade'.

Protect our open space from development. Local Plan to protect, unlike existing plan.

Improvement to footpaths, bridges, etc.

Countryside walks, cycle rides, parks.

Upgrade local nature reserve.

This used to be a wildlife sanctuary with newts that were removed to Cornwall and were supposed to be returned to the area once most of construction was completed.

No need for so many football pitches especially a 3G pitch dead against it as it is right in front of our property not what we thought was ever going to be there right in the middle of a residential area. There must be a better site.

Protection and enhancement of Biggleswade Common - all parts of the common.

Farmland character of Langford - of market gardening village heritage.

Left the same.

Maintain local historic buildings around Market Square and Parish Church.

Create a new public park alongside the river.

There is an opportunity to incorporate nearby areas of land into the Green Wheel thereby providing space for the local population to enjoy. This specific piece of land is directly adjacent to the Green Wheel path.

Maintaining the beautiful park and countryside that is a small walk from the town adds to the natural beauty of Biggleswade.

Better parks and play facilities. A splash park at Franklins?

Desperately need to protect and enhance natural open space to buffer ongoing building development.

Maltings should be protected.

Allotments need protecting. This is a benefit to people and the environment.

Biggleswade has been a market town surrounded by countryside - we cannot afford to lose any more green space.

Maintaining character of town centre buildings especially incl The Lounge building.

This space is on the Green Wheel with more houses being built. Parkland should be kept. There is already a field being taken for showground people. This area is good for wildlife and should be kept as farmers field and landscape.

Protection and improvements on and around Biggleswade Common.

Great work already done, e.g. RSPB, Green Wheel, etc.

The field adjacent to the Green Wheel and path which makes it an ideal place for exhibiting it as an open space. The growing development in this area it is more important to preserve this area or green space.

This field could be part of the Green Wheel - there is already a wood adjacent to this field and the Green Wheel links well with the moat that's here (Heritage Monument status).

There is a lot of history in Biggleswade, Crown Hotel, Maltings, old fire station, even the cinema is an Art Deco(ish) building. Embrace and keep history here.

Old buildings. There aren't many remaining and it's a shame to see the Maltings go, with little dispute. NEW housing isn't needed in centre of a town that's losing character.



However, unacceptable use of language has been omitted.

Transport

Question: With your chosen type of Transport, please pin-point **one** specific place on the map table using your **pink** sticker where you think there is an opportunity. Please expand below on what you would like to see at this location:



Parking, parking, parking - Bonds Lane.

Roads in Langford are in desperate need of repair/upgrading and the speed vehicles travel through the village along with the increase in residents will only cause further issues.

A lack of parking in town and around the new developments is hurting business. The sheer weight of traffic is beginning to overwhelm the current roads.

A1 roundabout 4 entrances and exit requires traffic control to improve flow of traffic.

Parking and traffic flow.

Improve buses.

A better bus service.

Northern bypass or nothing

Improve pavements for those in wheelchairs. Paths are often too narrow and pedestrians don't feel safe walking with speeding traffic thundering by.

Vehicular movement around the area needs a drastic rethink. The overall infrastructure of the area at present is not adequate.

Cycle lanes are nowhere in the streets.

Parking problems. Too many commercial vehicles parked overnight. Roads need resurfacing.

The A1.

Improved road layouts. Carriageways promptly repaired.

Station is not accessible for disabled people.

The A1/M1 link means now most traffic uses A507. Local traffic use and need alternatives i.e. Edworth Road.

More parking for local amenities.

Liaison with Network Rail to improve access to Biggleswade Railway Station. Need for a lift to enable access to the platforms. Current stairs are too steep - no access for those with mobility issues.

Buses running later.

We need buses to run from Biggleswade to Langford later in the evening to accommodate commuters and to allow people to come in to Biggleswade to eat out, etc. bringing financial benefit to traders.

Integrity of Green Wheel running parallel to Saxon Drive.

The Biggleswade Green Wheel should be a consideration for all developments re: contributions to its development; including if development necessitates re-creation/realignment of Green Wheel routes outside of built area. Development must contribute to safe crossing of A1 south of the town.

Cycle paths.

Improved links to Cambridge.

Improve bus service.

Try to relieve the car congestion in town, e.g. more car parks on edge and then good footpath to walk into town for prams/cycles, disabled.

Car parks around the town.

Improve bus services.

Congestion in town centre and Shortmead Street out to A1 need a better route that avoids town.

Lack of bus services in village of Langford.

Keeping roadside footways clear of undergrowth grass, hedges and parked vehicles.

Cycle ways to link other villages.

Improve bus services.

Bus service poor, bus shelters removed from Baden Powell Way.

Not very good bus routes around Kings Reach. Why was the bus shelter taken away in Baden Powell Way?

Better bus service.

Cut back vegetation to enable cycle path Biggleswade/Langford and link across A1 to facilitate larger Green Wheel routes. Footpath to Beds Growers.

Cycle/leisure link from Church Street to river.

Still need bus route.

Better transport links between Market Square and Kings Reach.

London Road is an increasingly busy road, used by cars and HGVs alike. There is an opportunity to make the roads a safer place with a cycle lane along the road. This would help promote a green mode of transport, help reduce unnecessary car journeys and will make a positive contribution to health.

We desperately need better cycle routes around town, into town and local parks.

Better bus service.

Because of the new building projects that are ongoing, I believe that "Potton Road" will become too congested in the near future and at the very least needs widening.

Disability access for passengers at the train station.

Kingfisher Way route should follow River Ivel through Langford, not divert via roads.

74 bus service needs to be retained. Need to be adequate stopping and waiting areas for buses in the town centre.

Shuttle bus from retail park into town - call it Biggleswade A1 retail!!

The road network cannot cope with the current level of housing. The Baulk needs to be returned to 2 way as currently causes pressure points at Drove Road/London Road junction and pushes traffic through Edward Road/Lawrence Road near the schools.

Shuttle bus from retail park to town. Make the retail park a 'Park and Ride'.

Better parking throughout. Shuttle bus between town centre and new retail park.

Buses on Dunton Lane have reduced to 3. To get to town is very difficult. More buses from retail park. Possible park and ride to town. Cycle paths seem non-existent. Look at Stevenage - they are a role model.

Transport cont.

A1 crossing for pedestrians and cyclists - will also enable Biggleswade Green Wheel extension.

More services at weekends (esp. Sunday). Accessibility improvements at railway station.

Bus services have reduced in this area which does not help us get into the town.

There is a bus stop here but the service is diabolical. Need more frequent service.

Be great to have a specific cycle route from the town centre to the retail park and the industrial estate. This would help link the two areas back together.

Disabled access at train station. Parents with prams or visitors with luggage.

Improvement to Drove Road to cater for increased housing.



Jobs & Businesses

Question: With your chosen type of Business, please pin-point **one** specific place on the map table using your **lime sticker** where you think there is an opportunity. Please expand below on what you would like to see at this location:

In and near the town centre.

Biggleswade town centre is rapidly decreasing as the new retail park thrives. No incentives are made to reduce rent to new retail businesses in the town centre or provisos on those taking units on the new park to put into the town centre. Parking in town is also an issue.

There are limited office spaces in the town. Some being turned into flats is placing further strain.

More parking required.

Bonds Lane is eyesore and needs developing for car parking, leisure or retail. The Market Square needs to retain its commercial area. There is creeping housing development encroaching into this area.

Biggleswade was a market town but businesses are finding it difficult to survive at the present time. Support should be given to Market Square shops.

Parking is still a great problem. A lot of families have 3 cars and it's not viable to park outside their houses resulting in congested roads where local services would be unable to get through in emergencies.

Small shops.

Small local units, not necessarily retail.

Local businesses - not nationwide chains.

Stratton Park is already planned and is a great addition. The High Street needs attention before it "dies"!

More amenities to deal with the extra housing.

Liaise with Town Council (BTC) to create a Town Manager as per Hitchin where there is a very good mix of small shops.

More variety needed not just estate agents and hairdressers.

Jobs and retail in to town centre are imperative to keep the town alive. Shops, small business units and 2-tier parking should be accommodated in the Bonds Lane area.

Where are our new parking areas in Biggleswade?

Improve shopping and business opportunities in the town centre. Can be offices here if better buildings.

Bonds Lane old industrial area.

Expansion of Biggleswade Business Park with access to A1.

Would like the town to have "character shops" and markets to entice people in. Like to see Bond Street developed perhaps indoor market and craft stalls.

Sports shops. Market Square indoors.

Expansion of Biggleswade Business Park with access to A1.

Impact of A1 business park on town centre. No clear town centre offer or plan.

Need for development in High Street to accommodate substantial development scheduled for Langford.

Light industrial small business for new start up.

Expansion of Biggleswade Business Park with access to A1.

Local business parks create work for local people, stops traffic on motorways and commuting on trains.

Probably needs to be expanded or some of the derelict looking building refurbished.

Update High Street shops.

Encourage companies to base facilities in Biggleswade - reduce amount of commuter traffic going south. Biggleswade has good links for European companies and it's quicker to get to Biggleswade from Kings Cross/St Pancras than to many areas of London.

Good access here to A1 and out of village location.

We must encourage business in our Market Town centre - or it will fade away!

Biggleswade already has large numbers of warehouse buildings which employ limited numbers of people. An innovation hub offers real opportunities to local entrepreneurs.

However, unacceptable use of language has been omitted.

Supporting local businesses. Offering pop-up shop opportunities to local business men and women.

Update High Street.

Some of the original town character has been lost. Potton and St Neots appear to be far more full of historical buildings and frontage.

The crown needs to be brought back into use asap.

The town centre is desperate for development but not residential.

More independent small stores.

Encourage empty shops to be filled.

Ensure there are good quality/useful businesses in and around High Street (Biggleswade) and Shortmead Street (Biggleswade).

There are already larger companies here. It would be good for the town to be one that welcomes small business. Sticker is for anywhere in the town.

Lots of companies encourage working from home now - if I had somewhere nice near Biggleswade that I could work with like minded people - I would pay to go there.

Increase deglobalisation. Helping young families and new individuals to the area, work here and not have to travel to London, for major small start up hubs.



Environment

Question: With your chosen type of environmental issue, please pin-point **one** specific place on the map table using your **green** sticker where you think there is an opportunity. Please expand below on what you would like to see at this location:

Don't built on flood plain between river and A1.

Concerns regarding existing problems with flooding and issues with future development and the flood risks that will inevitably happen.

Developments on the edge of town are eroding the open spaces.

Would value more wildlife habitat.

Keep open spaces across to the railway.

Traffic noise from the A1 spoils the peace and quiet of the Franklin Recreation Ground and of the countryside. Through traffic is also noisy in town.

Since the bridge was closed for repair street became a one way system with large lorries parking down the road speeding and where I live it can be harrowing to drive out from our property.

A1. Nice to see an off and on junction from Langford Road.

Wind turbines were an issue at planning. Now we're living with them no-one notices. Just add more where they are.

More wind turbines in the same area.

Flood risk is a potential future problem due to the continued new house building - esp. to east of Biggleswade/Potton borders.

All elements of Biggleswade Common should be protected. The Biggleswade GI Plan and Green Wheel masterplan demonstrate the need to buffer Furzenhall Common against new developments.

Open spaces soak up pollution, noise and flood. I'm most concerned with the common and flood plain.

Develop wildflower meadows and more wild spaces for birds and animals which are being driven out by development.

Solar and wind.

No coalescence.

Build new houses with solar panels in. Also put roof on Asda and Sainsbury car park and use solar panels so they supply energy to the supermarkets, etc.

Resist coalescence of Langford and Biggleswade - retain open land north of Langford.

All new homes should have solar panels.

Open space for walkers, children and families. Education source. Panels on industrial/business parks roofs.

Noise pollution creates more problems with health in all ages.

Landscaping finished in this area.

Open land including farmed habitat ought to be protected/maintained in this area to keep the character of the village.

Left to open space.

We need to protect 'open space' or we will lose it in all the development!

Biggleswade is rapidly expanding which makes the need to incorporate open spaces/wildlife habitats all the more important (into our local environment).

Traffic pollution - noise.

We already have excellent wind turbines on the Langford side of Biggleswade. Biggleswade Common and the Furzenhall open spaces should be protected from development if possible.

Country Park.

Expand Langford wind farm.

Open spaces need to be a priority.

Please keep our fabulous green countryside. The green wheel is a fabulous asset that shouldn't be lost Biggleswade Common is awesome!

More open space for everyone to use, e.g. walks, cycling.

Same as before - any open spaces need to be kept. Especially in Stratton area.

Protection and improvements for wildlife on and around Biggleswade Common.

Environment continued

Continued protection of green space, with walking/cycling access, e.g. Green Wheel and more like this.

The Green Wheel has already started a woodland and this should be extended to help wildlife. Paths could also be put in to help with education of children about wildlife.

See comments made in Local Character.

Lots of wildlife here, esp. birds. A bird watching area, with more local and accessible walks. More trees and open grass.

General maintenance of open spaces. Broken fencing, emptying dog bins, more dog bins and weed clean up.



Homes

Question: With your chosen type of Home, please pin-point **one** specific place on the map table using your **purple sticker** where you think there is an opportunity. Please expand below on what you would like to see at this location:

Not Housing Association. Down-sizing for those who currently use their own home.

No issue with the massive number of homes being built but the fact that these houses are so expensive that local people cannot afford them!!

Homes are being built with insufficient road space for families with multiple cars.

Suitable for older people to reach town centre.

We need more homes to rent.

Local people should be given priority over people from other areas.

A mixture of all homes would be welcome providing adequate infrastructure is in place.

Most elderly live in bungalows or Council housing but the youngsters 18+ cannot get on the first rung to buy houses that are affordable.

More bungalows provided to any new housing estates.

Homes on one level, adequately insulated and with good public transport links.

Single level homes i.e. bungalows.

There are insufficient family homes in the area. Consequently people can't upgrade and release the cottages and starter homes. The area has a mass of small residences with overcrowded occupancy.

More homes in Langford with A1 links.

There is a real need for affordable rented accommodation as many young people/families are not able to purchase property. Work closer with Housing Association.

There is already enough housing in Langford of various types. Infrastructure won't support more.

Too many planned houses in flood plain areas.

Infill and brownfield. The town has had sufficient large developments.

Sheltered accommodation within new development e.g. Frazer Road.

Homes for estate workers.

Langford triangle.

There is enough houses in Biggleswade so put affordable houses further out.

Langford triangle is ripe for development and will allow open setting to be retained.

Increasing older population. New homes focussed on families.

To allow young families to purchase their own homes. Don't mind where it goes, just need it.

Affordable housing for starters and young families.

Good space and landscaping for people from the village.

Langford triangle is ripe for development and will allow open setting to be retained.

Single people need somewhere to live. They also generate and use more facilities for the community.

Young people have to move away because they cannot afford to live in the area.

Affordable homes - e.g. support for young people growing up in the area rather than folks moving north from London.

Homes for elderly in this area because of proximity to shops and facilities in the village (p.s. I'm 32!). Any development at this end of the village close to school, pub, shop, pharmacy, etc. is best.

We need 'starter' homes for the young.

Biggleswade has already had substantial house building. House building should be spread across the county.

No more housing!

As part of new developments.

Houses should be a priority for locals. Houses are only affordable for those coming in from out of the area such as London.

However, unacceptable use of language has been omitted.



More people are moving north to Biggleswade to buy bigger houses for their money - pricing locals out of housing market.

Stop developers using such high impact/density housing.

Anywhere else other than Biggleswade. Too big now.

More shared ownership opportunities.

Re-use more brownfield sites across Central Beds, rather than expanding on green sites.

Biggleswade has already grown enough over the past years. It is now time for the rest of the County to play their part.

I know homes are needed, there has been so much in Biggleswade built maybe it could be spread around Bedfordshire's towns throughout the County.

People need space and be able to access shops and friends. Build starter homes to help the economy and make houses near transport links.

People that want a nice small home, want to leave London but can't afford to buy.



Growth & Infrastructure

Question: With your chosen type of Infrastructure, please pin-point **one** specific place on the map table using your **orange sticker** where you think there is an opportunity. Please expand below on what you would like to see at this location:

All four above needed if Biggleswade has to keep taking houses.

Langford has a huge influx of new developments yet still the issue (raised with CBC many times) of no spaces in the pre-school in Langford.

Internet provision and mobile data are restricting growth. Many people work from home and business on the industrial estate are limited by slow speeds, less than 5mbps.

All of these areas need reviewing/upgrading.

Not much for people to do particularly teenagers. Bowling alley, cinema.

Biggleswade Scout Group is growing and will continue to grow. An area of land for the provision of a scout would be most welcome.

With only two practices in Biggleswade they could enlarge this especially with all the new housing going up.

Need for larger school for increased housing.

More sports facilities for everyone. Flitwick have had one sports centre built, knocked down and new one constructed and Biggleswade are still waiting for our sports centre.

Facilities for minor surgery, x-rays, blood tests. Biggleswade Hospital to be maintained.

Biggleswade Hospital to be developed and maintained.

Nursery schooling without driving across towns increasing carbon footprint.

Need to continually provide new schools or classrooms to existing schools - including special needs.

Doctors are already overloaded with no plans to expand. Equally schools are in the same position.

I currently wait an average of 3 weeks to see a nurse or a doctor. Schools are full and the pubs are closing.

Create a 'Town & Country Park' for the community as a major asset/start and finish point for the Green Wheel.

Our young people are missing out in Biggleswade.

Cinema and leisure facilities - Biggleswade may be near A1 retail/business area.

Old Bonds Lane site also Station Road/Bonds Lane old buildings.

Improved lower school and pre-school.

Cinema, bowling alley, games and pool tables - more entertainment for teenagers.

Bowling alley, cinema for teenagers.

Improved lower school and pre-school.

Schools at capacity, new St Andrews site in Kings Reach is already going to have to be extended.

Pre-school in Langford is insufficient, unable to take scheduled development.

Pre-school provision needed.

Doctors with parking.

Improved lower school and pre-school.

Main healthcare centres already under pressure from increase of homes in the area.

The hospital that is already there could be refurbished to accommodate more healthcare.

More doctors.

Biggleswade Town Centre - ensure it's a place to go rather than avoid, e.g. all routes from Kings Reach bypass - Biggleswade.

Poorly provisioned end of the village for infrastructure. Possible middle school on 10 acre boot end site?

Too many houses with no facilities for local people.

Too many houses with no facilities for local people.

With the current expansion of our Market Town we will need more school places.

Splash park.

The leisure centre is a valuable local resource, but there is no community centre in the local area. This can play a park in building a real community in the area.

My main concern with infrastructure is with roads not so much facilities.

Doctors.

Not enough doctors at present to service our community and definitely not enough for the new builds that are under construction.

Cinema, restaurants, nightlife.

Let's have a cinema and some decent car parking so Station Road etc. aren't chock-a-block in the evening.

It's ok building houses but people especially youngsters need something to do and places to go.

Support the town centre traders - the centre needs support and help before it dies.

Cinema.

All infrastructure needs improving!! Schools, doctors, community centres, leisure ...

Anywhere in Biggleswade.

More GP services needed in the growing community of Biggleswade.

The lack of schooling is a ticking time bomb! Need more schools of all tiers to match house expansion.

Would be nice for telecom companies to update to fibre optic for businesses and private homes.

Big and better health centre. Make sure there is more parking and buses to get there.

I have personally seen a decline in GP service since the Kings Reach development has grown (I live on Kings Reach). But I also notice that services are poorer than London (left London 5 years ago), fewer appointments and cuts on medication.



Langford
facilities
upgrading
reviewing
provision
Town
house
Kings
school
area
local **four**
centre
service
Cinema
doctor
pre-school
community
Reach

Biggleswade

Appendix - Supplementary Questions on Feedback Form

Thank you for responding to this consultation.

Your views will help us to shape the Community Plan that will inform the Local Plan, influence development decisions and help direct investment where it is needed. There will also be other opportunities to comment on the Local Plan as it is developed. There will be an opportunity to express your views in more detail at the next stage.

Please answer the following questions:

Gender: Male Female Age range: Under 18 18-25 26-35 36-45 46-64 65+

What postcode do you live at? _____

Which town/village do you shop at most often? _____

I am a local resident I am a Town or Parish Councillor for _____

I am an organisation representative please state _____

Which town/village do you work in (if applicable)? _____

Do you consider yourself to be disabled? Yes No

To which of these groups do you consider you belong? White British Black or Black British
 Asian or Asian British Mixed Chinese Other Ethnic group (please write in) _____

Would you like to be informed of the arrival of the Consultation Draft of the Community Plan for your area? We can notify you of its publication.

Be assured that your personal details will not be published in any report or passed to a third party.

By post or email

Name: _____

Address _____

Email: _____

Please tick if you would like to be kept informed of Local Plan Updates.

After completing this feedback form please place in box at front door.

Or post back to us at Local Plans, Priory House, Monks Walk, Chicksands, Shefford, Bedfordshire SG17 5TQ

Data Protection Act 1998 Please note that your personal details supplied on this form will be held and/or computerised by Central Bedfordshire Council for the purpose of the Local Plan. The information collected may be disclosed to officers and members of the Council and its' partners involved in this consultation. Summarised information from the forms may be published, but no individual details will be disclosed under these circumstances. **Your personal details will be safeguarded and will not be divulged to any other individuals or organisations for any other purposes.**

Sign up for email updates ...

 www.centralbedfordshire.gov.uk/localplanupdates

More information on the Local Plan can be found here...

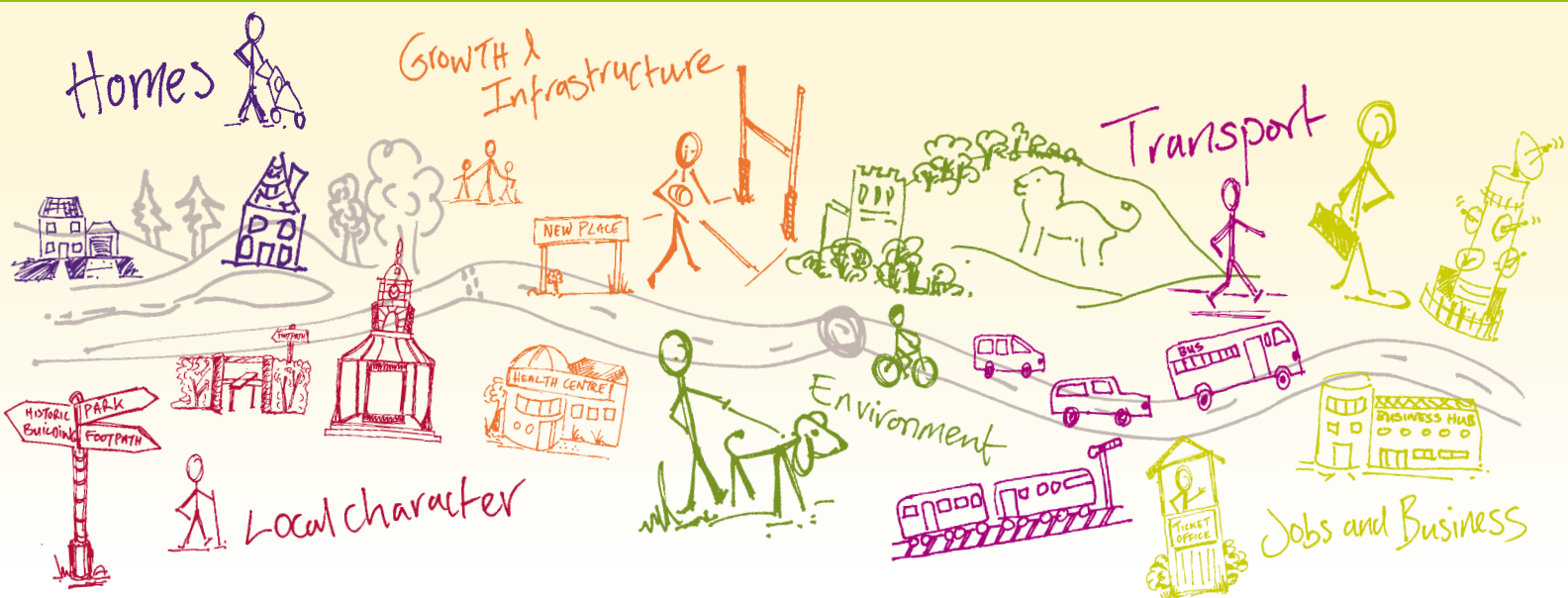
 www.centralbedfordshire.gov.uk/localplan

Appendix – Supplementary Questions Summary

Public Consultation Northhill Attendees Record

	Gender	Age	Res/Cllr/Org	Disabled?	Ethnic Group
Response	Male: 33 (53.2%)	Under18: 0 (0.0%)	Resident: 59 (95.2%)	Disabled-Y: 3 (4.8%)	White British: 60 (98.4%)
	Female: 29 (46.8%)	18-25: 0 (0.0%)	Councillor: 5 (8.1%)	Disabled-N: 60 (4.8%)	Black or Black British: 0 (0.0%)
	Unknown: 0 (0.0%)	26-35: 3 (5.2%)	Organisation: 3 (4.8%)		Asian or Asian British: 0 (0.0%)
		36-45: 10 (17.2%)			Mixed: 0 (0.0%)
		46-64: 18 (31.0%)			Chinese: 0 (0.0%)
		65+: 27 (46.6%)			Other Ethnic Group: 1 (1.6%)
Nothing Recorded	10	14	10	9	11
Total	72	72	72	72	72

Shaping where you live 2035



What happens next?

Community Planning is a continuing process and this Community Plan, which collates all the information gathered at the event, is the first time this type of information has been collected. There will be a series of actions arising from the Community Plan which are likely to influence or shape planning policy in the Local Plan, decisions on planning applications, and decisions on where money arising from development should be spent. Central Bedfordshire Council will seek to work in partnership with organisations including Town and Parish Councils, developers and other agencies to deliver on these actions.

For more info on community planning ...

www.centralbedfordshire.gov.uk/community-planning

More information on the Local Plan can be found here...

www.centralbedfordshire.gov.uk/localplan

Disclaimer Central Bedfordshire Council is the statutory Planning Authority for the area and therefore is bound by legislation and must have regard to government guidance on planning matters.

Community Plan produced in consultation with Central Bedfordshire Council supported by www.lda-design.co.uk

This document contains:

Contains OS data © Crown copyright and database right 2016
Contains Royal Mail data © Royal Mail copyright and Database right 2016
Contains National Statistics data © Crown copyright and database right 2016

Central Bedfordshire Council:
© Crown Copyright and database right. 2016 Ordnance Survey 100049029

Central
Bedfordshire

A great place to live and work.